

Source: Leece-Neville Heavy Duty Systems Division - Arcade, NY USA  
 Date: January 6, 2010  
 Bulletin No: TSB-1063\_A  
 Models: M125R 12V Starters  
 Subject: Wiring/ Terminal Identification

**TSB will explain the wiring, terminal identifications and locations compared to a Leece Neville MS2 or Delco 42MT starters.**

Image of M125 starter used in this document does not represent all models. Relay and ground terminal locations can be in slightly different locations.

It maybe necessary to rotate the relay to another position to avoid a clearance issue on the vehicle. Loosen nut to reposition relay and tighten. Torque nut to 55-60 lbs-in.

Primary Positive (Yellow placard)  
 Connection from Battery  
 Torque: 20-22 lbs-ft.

"S" Switch Terminal  
 Connection from  
 Start Switch (Green placard)

Note:  
 Relay is part of the starter soft start feature. This relay must not be removed under any circumstances. Severe damage to the starter will be the result.

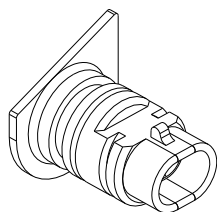


Fig 1  
 M264105399S  
 OCP Bypass Connector

"S" Switch Terminal  
 Connection from  
 Start Switch (Green placard)  
 Torque: 20-25 lbs-in.

Primary Earth/ Ground  
 Connection from Battery  
 (Orange placard)  
 Torque: 20-22 lbs-ft.

**OCP**  
 Note: If the starter being removed incorporates this connection; it is no longer required for the M125R starter has this feature built in. Install the furnished OCP bypass connector into the vehicle connector to properly bypass this circuit.  
 M264105399S OCP bypass connector shown in Fig 1.

Note: Each TITAN™ M125R starter is now fitted with terminal placards to help identify these terminals. Upon making each connection to this starter remove and discard each placard.

**Important:** The information contained in this bulletin is intended for use by trained, professional technicians who have the proper tools, equipment, and training to perform the required maintenance described above. This information is NOT intended for 'do-it-yourselfers', and you should not assume that this information applies to your equipment. If you have any questions regarding this information please visit our website at [www.prestolite.com](http://www.prestolite.com), or contact our technical service department at: